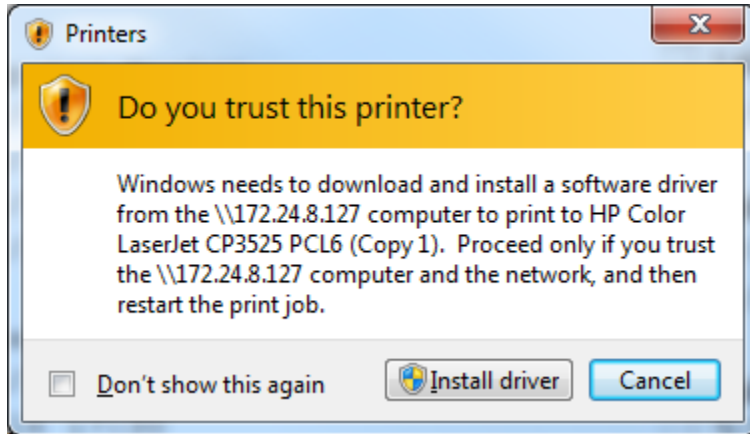


Can't Print to Color Printer

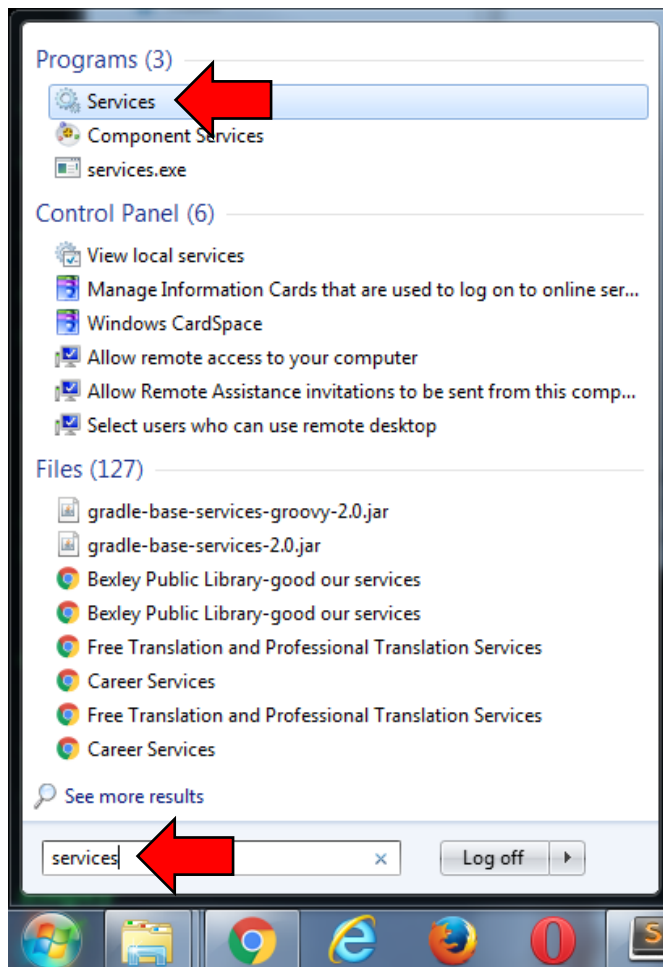
Every now and again the color printer in circ likes to clear its connections, which prevents us from being able to send print jobs to this printer from the staff machines in the Computer Lab. This is due to the network, and I can't fix this permanently unfortunately.

In addition, sometimes it will repeatedly ask you to update its drivers (see screenshot below).

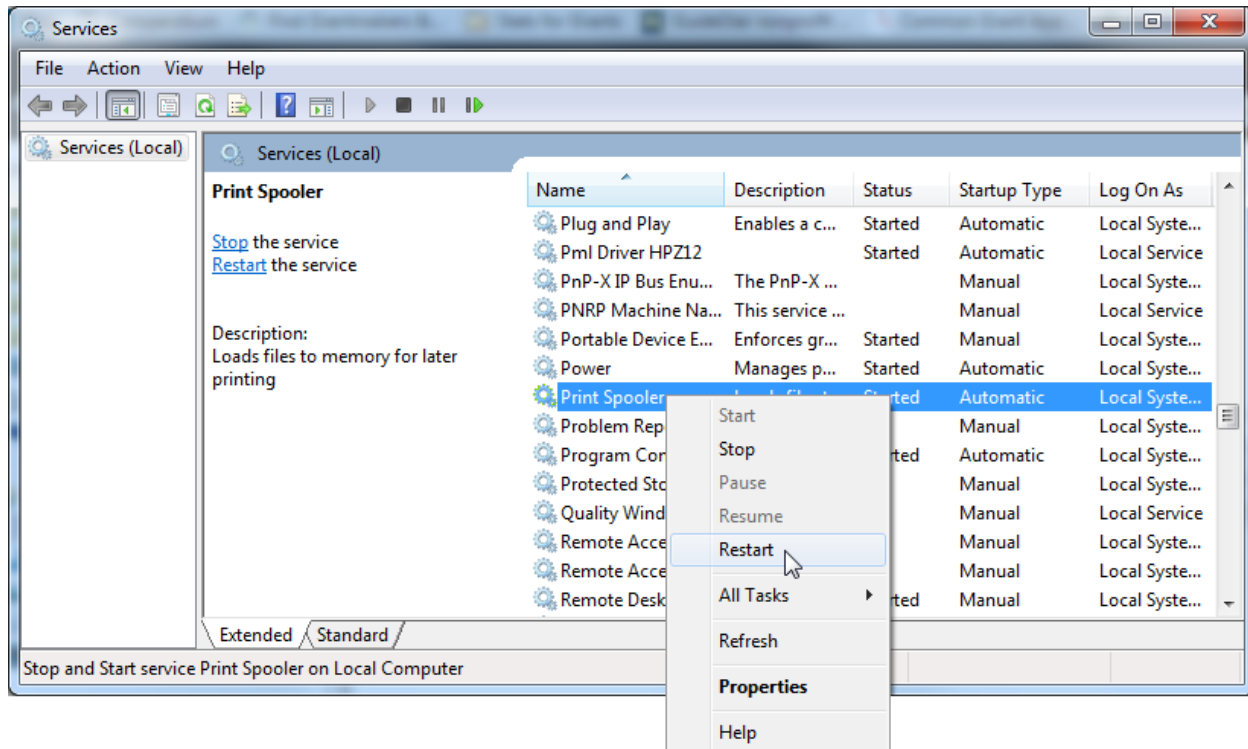


Here is what to do if you are having difficulty printing to the color printer:

1. Click on the **Start Menu**. Type "services" in the search box and then click on "**Services**" in the search results.



2. A "Services" window opens. Scroll down the list until you see "Print Spooler". Right click it and click "Restart".



3. This should reset the connections. Try printing to the color printer again, it should now work.